

Description

MediaMAX™ tool-less Category 6 rated data jacks provide performance that exceeds TIA/EIA-568-C.2 channel/link and component standards.

The new jack design provides consistent, reliable, and easier wire termination. IDC with tool-less toggle connections aid in maintaining maximum Category 6 performance, providing a gas tight connection and improved cable retention.

Product Specifications

Wiring:	568A or 568B
Insertion Life:	750 insertions
Housing:	High impact, UL 94V-0 rated thermoplastic
Contacts:	50 micro-inch nickel with minimum 50 micro-inch of gold
IDC Blocks:	Tool-less toggles
Conductor size:	22-24 gauge

Electrical Specifications

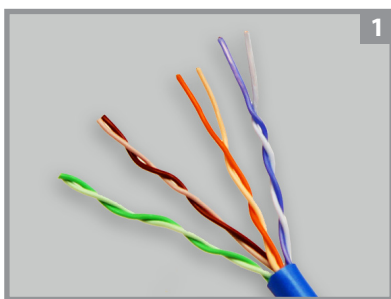
Contact Pressure:	>100 grams.
Contact Resistance:	<10 milliohms
Insulation Resistance:	>500 megohms
Voltage/Current:	140VDC @ 2.0 amps
Dielectric Withstand:	1000 VAC RMS @ 60Hz



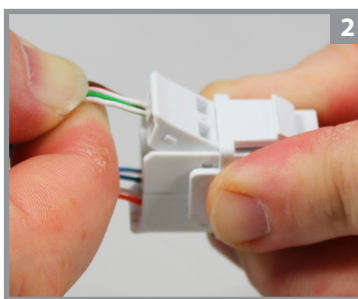
Features

- New housing design allows mounting to both Suttle SpeedStar™ and generic keystone wall plates
- Tool-less toggle eliminates individual wire punch-down and provides consistent IDC termination
- Unique "dual-toggle" design helps preserve wire twist during assembly
- 568A and 568B color-coded label for easy wire identification
- Jack installs easily from rear of wall plate
- Complies with TIA 1096 (formerly Part 68 of FCC Rules)
- Flame retardant (UL 94V-0)
- Individually packaged with assorted color-coded bezels
- Listed to UL 1863 Communications Circuit Assembly
- No extra parts required for wire termination
- No excess wire trimming required

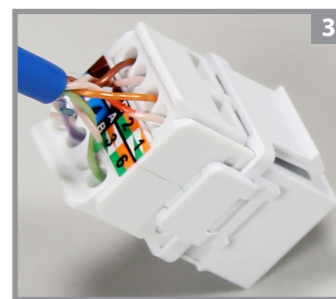
Installation



Prepare



Insert



Locked and Terminated

Product Information

Suttle Part Number	Description
STAR6000C6T	Category 6 jack, 8-position, 8-conductor module, tool-less IDC with 8 color-coded bezels Bezel Colors : Electrical Ivory, Yellow, Orange, Green, Red, Blue, Light Almond, White